

NEW!

TEAM FEEDER

150-ball Team Feeder with Wireless Remote for I-Hack Attack Pitching Machine

- NEW! Wireless Remote Control - A compact, easy to use remote control now comes with each unit, enabling easy "on/off" from anywhere on or near the field.
- NEW! Variable Speed Ball Delivery - Dial adjustment on feeder control panel sets the time between pitches with a range between about 6-12 seconds.



SOLO FEEDER

15-ball Solo Feeder for I-Hack Attack Pitching Machine

- Extremely portable 15 baseball capacity Solo Feeder provides adjustable intervals between pitches.
- Feeds the baseball I-Hack Attack, Hack Attack and Junior Hack Attack.

Machine Cover

- Lightweight, weatherproof vinyl cover will protect the Elite eHack Attack or I-Hack Attack baseball machines while in storage indoor and out. Bottom grommets will accommodate chain and lock for added security.

NOTE: Go to Volleyball page and click on Volleyball Accessories. This cover will fit the ELITE eHack Attack and I-Hack Attack machines.



ph 775.345.2882
 tf 800.717.4251
 sportsattack.com

BASERBALL

ELECTRONIC MACHINES



Taking Training To The Next @Level

These two electronic machines have customizable features and capabilities that take your training to a whole new level, all right at your fingertips.

Elite eHack Attack electronic baseball pitching machine.

Using a large 12" touch screen interface you will be able to precisely control pitch type, speed, spin (controlling each individual motor), angle and pitch location. You can develop your own unique pitches, favorites and sequences or quickly access pre-set pitches that can all be delivered in random or repeat modes. Select your pitch (or sequence) and the throwing head automatically adjusts to your exact specifications.

Standard (pre-set/default) Pitches

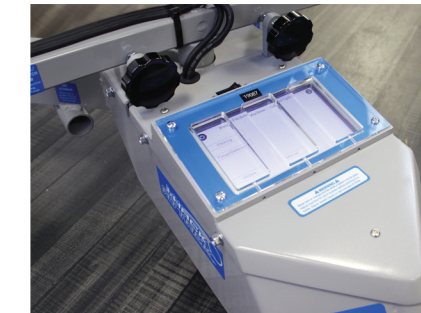
For quick, simple operation, there are eight standard pitches instantly accessible (fastball, change-up, heater, split finger, curveball right & left and slider right and left). Customize the speed and spin of any standard pitch to meet the requirement of any drill and skill of any hitter. Modify the location in the strike zone or enlarged strike zone (two strike count).

Favorite Pitches

Once you have fine-tuned a pitch you would like to access later, you can save it to your favorites from either the manual mode or standard pitches screens. Save up 24 pitches, and immediately access them in any order at any time. You can also alter the spin, speed and location of that pitch and resave it as a favorite.

Favorite Sequences

A sequence of pitches (24 sequences, 12 pitches each) can be quickly saved and accessed on your favorite sequences screen so you can challenge the mechanics of any hitter or replicate a specific pitcher. These are just a few examples...visit sportsattack.com for more features on the Elite, our newest automated pitching machine.



Advanced Software Program

Use the touchscreen to modify any pitch by making finite adjustments to each motor individually

I-Hack Attack electronic baseball pitching machine.

The I-Hack Attack also has a touch screen interface used to control and select pitch type, speed and spin. Easily access and save favorite pitches and sequences. Rely on the eight pre-set pitches and eight pre-set defensive drills or go immediately to manual mode and dial-in any pitch. Select your pitch and move the throwing head into position.

Pitch Locators

Fully adjustable throwing head pitch locators will quickly position pitch (high, low, and inside, outside) in up to four locations within the strike zone. You can work one quadrant of the strike zone and quickly move to a different quadrant for the next pitch. Horizontal pitch locators go across the width of the plate and vertical pitch locators move pitch up and down (high and low); together you can go high and inside, then the next pitch is low and outside. Release pitch locators for free movement of the throwing head for all fungo work, like line drives and fly balls.

Favorite Pitches and Sequences Saved

Use the save function to quickly return to your favorite pitches (up to 18) or to an effective saved sequence (9 sequences, 3 pitches per sequence) of fastball, heater and change-up. Make efficient use of practice time without resetting each pitch. Save function facilitates more than one operator as desired pitches or sequences can be immediately accessed.

Visit sportsattack.com for more details including operation and installation manuals, instruction videos and more.



ELITE
eHACK ATTACK

Elite eHack Attack Specs

- Speed - 100+ MPH
- Weight - 235 LBS
- Pitch Location - Adjusts Automatically
- Fungo - Pitches only
- Level of Play - High School, College, Professional
- Vision - Complete ball vision provides a realistic sense of timing
- Accuracy - Ball is gripped in three locations, providing tremendous control and accuracy
- Efficiency - Use touch screen for pitch selection, no throwing head adjustments



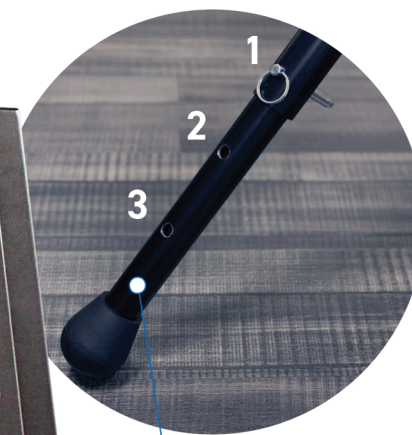
I-HACK
ATTACK

I-Hack Attack Specs

- Speed - 100+ MPH
- Weight - 195 LBS
- Pitch Location - Adjusts manually
- Fungo - Full range of fungo work, 380 FT fly balls
- Level of Play - High School, College, Professional
- Vision - Complete ball vision provides a realistic sense of timing
- Accuracy - Ball is gripped in three locations, providing tremendous control and accuracy
- Efficiency - Use touch screen for pitch selection, no throwing head adjustments



ELITE eHack Attack



Adjustable Leg

- Elevated Platform Application (for more realistic ball release)
- Level Surface Application (machine and home plate at same level)
- Pitching Mound Application (back leg is positioned directly on pitching rubber)



I-Hack Attack

High/Low Pitch Locator

Pitch Elevation Control

Inside/Outside Pitch Locators

Sports Attack's Exceptional Training Machine Quality

The Elite eHack Attack and I-Hack Attack pitching machines both have a unique three-wheel design that allows you to see the ball clearly and fully all the way through the feeding motion, acceleration and release, just like a live pitcher. With this design, the hitter sees when to stride and the angle of release, giving him an actual live-arm sense of timing and location.